



CLUB BUNGALOW #2

KE ALAULA STREET, KOLOA, HI


Kukui'ula®
SOUTH SHORE, KAUAI

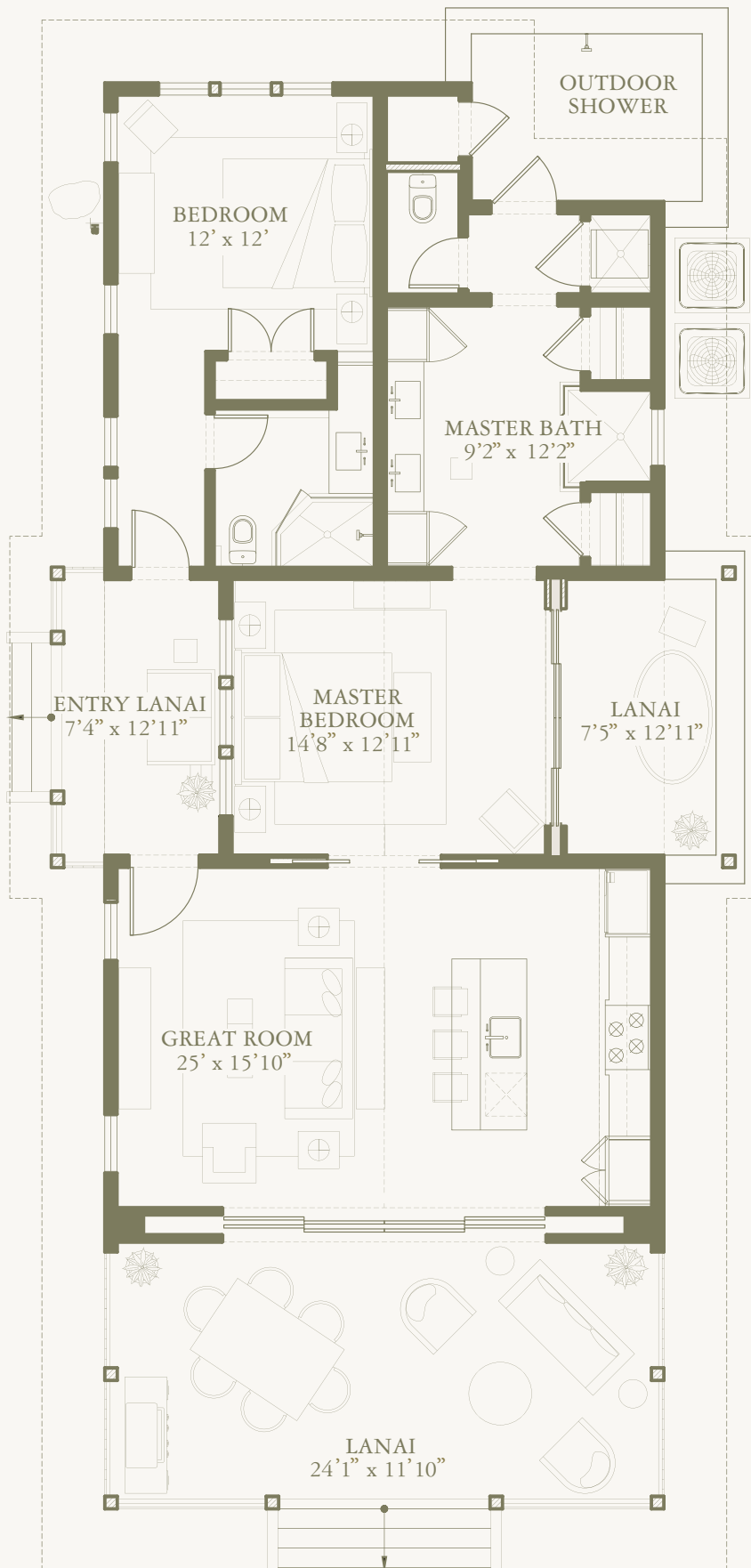
CLUB BUNGALOW #2

Turnkey practicality, the charm of Plantation-inspired architecture and the ease of a location close to every Kukui`ula amenity makes the Club Bungalows irresistible. In a park-like setting lush with Kukui`ula's signature landscaping, this floorplan features a spacious master suite which includes a private sitting area and a garden-like outdoor shower. The separate guest suite off of the home's main entrance makes room for family and friends, and the large lanai off the Great Room opens to the expansive fairways of the golf course. The Club Bungalows include a designer turnkey furnishing package created by Kathy Merrill Kelley. Parking is conveniently near and Bungalow ownership includes a carport with enclosed private storage.

- TOTAL LIVING AREA: 1,762 SQ. FT.
- BEDROOMS: 2
- BATHROOMS: 2

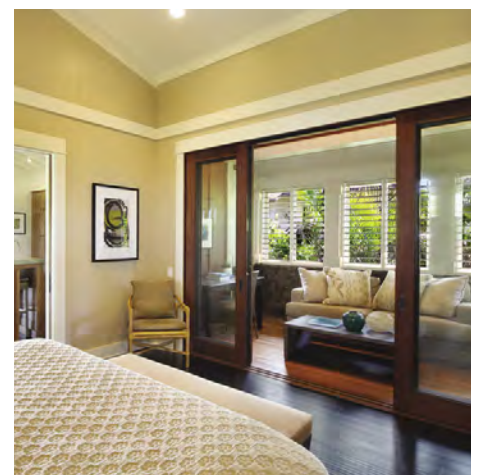
- AIR CONDITIONED LIVING AREA: 1,221 SQ. FT.
- DESIGNER/BUILDER: **Jeffrey Berkus Architects**
- INTERIOR DESIGNER: **Kathy Merrill Kelley**





FEATURES:

- Plantation-style exterior with cedar-shake roof
- Board & batten exterior siding with lava rock walls
- 2" x 6" exterior walls
- Hand scraped dark wood flooring
- Vertical-grooved, interior wood paneling
- Pella, aluminum clad, wood windows with Low-E glass
- Custom Mahogany interior doors
- Large lanai with Cumaru hardwood decking
- Sliding Mahogany and glass pocketing doors at rear lanai
- Under home storage for beach gear
- Multi-zone air conditioning
- Structured wiring package
- Natural stone kitchen counters
- Ceresed Teak cabinetry throughout
- Wolf gas range and microwave
- Sub-Zero integrated refrigerator
- Bosch stainless dishwasher and washer/dryer
- Built-in closets with custom shelving, drawers and safe
- Master-suite bathroom with free-standing tub and dual sinks
- Natural marble bathroom countertops
- Outdoor garden shower located off the master suite bathroom
- BBQ on lanai
- One-car carport with enclosed storage room
- Contemporary turn-key furnishings package including all indoor and outdoor furniture, tabletop & linens, state-of-the-art electronics package and artwork






SOUTH SHORE, KAUAI

KUKUIULA.COM | 808.742.0234
2700 KE ALAULA STREET, KOLOA, HI 96756

The Developer does not represent or warrant that the actual view from any lot or that any existing view, will not be obstructed in the future. There are no protected views in the project and there are no assurances of the existence, or continuance, of any particular view. Kukui'ula Realty Group, LLC, project broker. The photos and renderings in this brochure are preliminary and are provided for illustration purposes only. The developer makes no representations, and expressly disclaims that the brochure images are accurately shown, shown to proportion or scale, or that all square footage areas represented are accurate. Photos of completed homes, fixtures, furnishings, water features, interior and exterior design, decorations and landscaping are also provided for illustration purposes only and the developer makes no representation or warranty regarding the same. This is not intended to be an offering or solicitation of sale in any jurisdiction where the development has not been registered in accordance with applicable law or where such offering or solicitation would otherwise be prohibited by law. Obtain the Property Report required by Federal law and the Public Offering Statement required by Hawaii law and read them before signing anything. No federal or state agency has judged the merits or value, if any, of the property shown in this brochure. **WARNING: THE CALIFORNIA DEPARTMENT OF REAL ESTATE HAS NOT INSPECTED, EXAMINED, OR QUALIFIED THIS OFFERING.** Fees, memberships and restrictions may apply for certain amenities. Details available. Price and availability subject to change. © December 2022. BBCP Kukui'ula Development Company (Hawaii), LLC. All rights reserved. No content from this brochure may be copied, republished, posted, or distributed in any way without prior permission from the developer.

