



KAHALAWAI CUSTOM HOME 17

3027 KALAHIKI STREET, KOLOA, HI


Kukui'ula®
SOUTH SHORE, KAUAI

FIND HARMONY IN AN IDYLIC KAUA'I HOME

As you step through the meticulous entrance of this home, pass by the serene Zen Garden, and enter through the intricately carved mahogany double doors, an immediate sense of belonging envelops you. Nestled in the upper reaches of Kukui'ula, this well-established neighborhood setting is elevated to new heights by its awe-inspiring vistas.

The refined elegance of the grand great room adorned with bespoke cabinetry seamlessly blends living and dining spaces under lofty vaulted ceilings. Expansive Albertini windows and doors anchored by Brazilian hand-scraped wood floors throughout invite in abundant daylight, invigorating breezes, and panoramic island views, creating a seamless connection to the outdoors. The culinary focal point of the residence is the chef's kitchen, boasting an

- TOTAL LIVING AREA: 4,490 SQ. FT.
- LANAI: 1,500 SQ. FT.

- BEDROOMS: 4 | BATHROOMS: 4.5
- LOT SIZE: 35,937 SQ. FT.

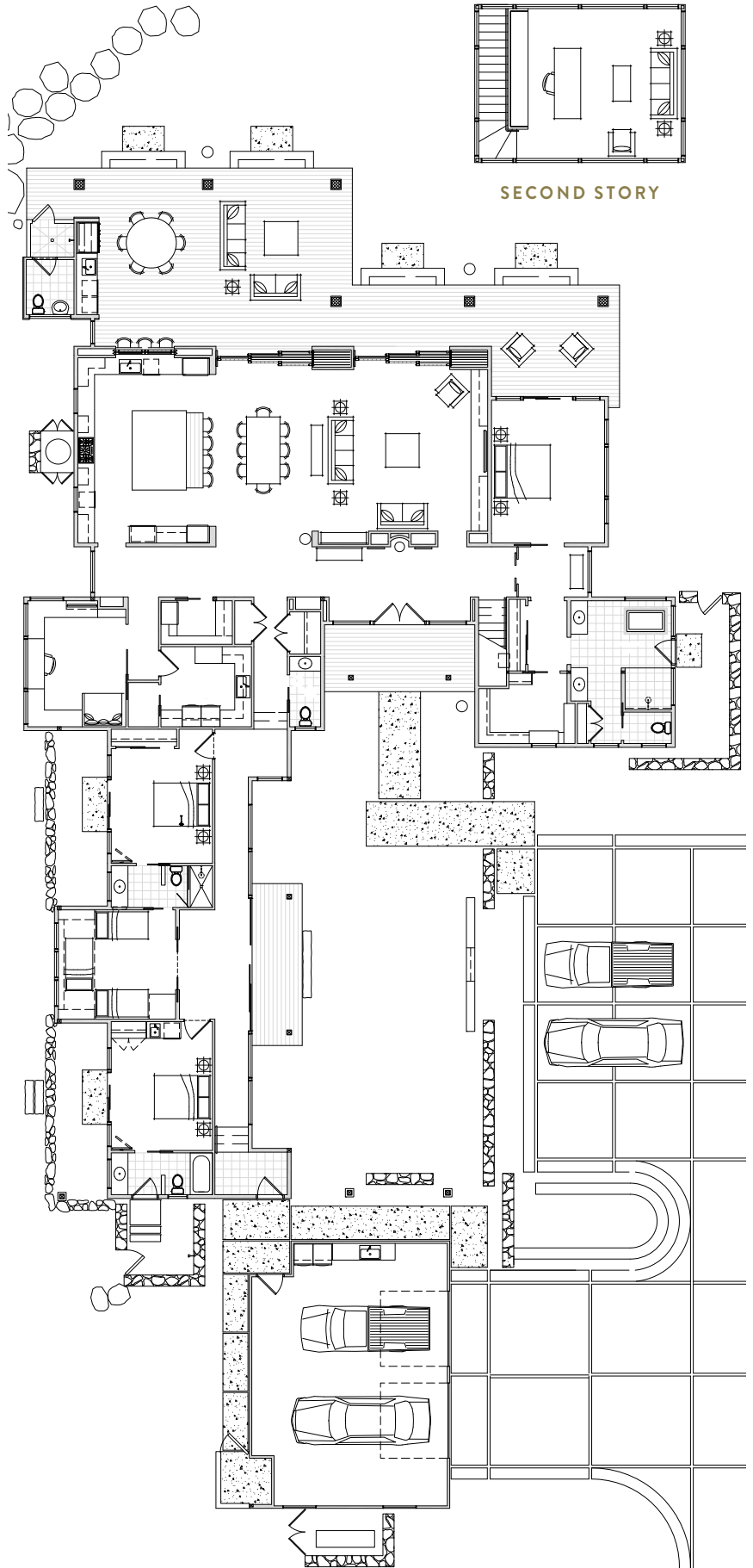


expansive countertop and a custom-designed island that serves both as a preparation area and a hub for entertaining.

For those who work remotely, there are two dedicated office spaces equipped with built-in desks and tailor-made cabinetry. The main floor offers a corner office while the second-floor tower office features a panoramic 360-degree view and a built-in under counter refrigerator.

As the day draws to a close, family and guests can retire to their generously appointed accommodations. The corner master suite, affording island views, boasts an extensive walk-in closet, and an ensuite bathroom complete with hand-crafted cherry cabinets, a soaker tub and a secluded outdoor Hamakua shower. The guest rooms are located in the 'ohana wing, affording separation from the main house for added privacy. The "Keiki" room offers built-in beds and shares a well-appointed Jack and Jill bathroom with the adjacent guest bedroom. The final guest suite provides ample sleeping space, an ensuite bathroom, wet bar, outdoor shower, and direct access to the backyard and pool area. And if you are looking for more space there is ample property to add-on or build a separate 'ohana.

Conceived to seamlessly meld indoor and outdoor realms, the spacious covered lanai, boasting an outdoor kitchen and sweeping ocean views, is complemented by a ground-level pool and an additional outdoor shower. Spanning nearly an acre, this expansive homesite is cocooned within secluded gardens and effortlessly maintained landscaping. Beyond the confines of your backyard, you'll relish convenient access to an array of community amenities, including hiking trails, a golf course, and cultivated groves. The home's energy efficiency, comfort, and interconnectedness are upheld by a Tesla solar system, zoned climate control, sound systems, WiFi, and an intercom. With its inviting ambiance and the full spectrum of modern comforts, this residence encapsulates the essence of an idyllic contemporary Hawaiian abode.






Kukui'ula[®]
SOUTH SHORE, KAUAI

KUKUIULA.COM | 808.742.0234
2700 KE ALAULA STREET, KOLOA, HI 96756

The Developer does not represent or warrant that the actual view from any lot or that any existing view, will not be obstructed in the future. There are no protected views in the project and there are no assurances of the existence, or continuance, of any particular view. Kukui'ula Realty Group, LLC, project broker. The photos and renderings in this brochure are preliminary and are provided for illustration purposes only. The developer makes no representations, and expressly disclaims that the brochure images are accurately shown, shown to proportion or scale, or that all square footage areas represented are accurate. Photos of completed homes, fixtures, furnishings, water features, interior and exterior design, decorations and landscaping are also provided for illustration purposes only and the developer makes no representation or warranty regarding the same. This is not intended to be an offering or solicitation of sale in any jurisdiction where the development has not been registered in accordance with applicable law or where such offering or solicitation would otherwise be prohibited by law. Obtain the Property Report required by Federal law and the Public Offering Statement required by Hawaii law and read them before signing anything. No federal or state agency has judged the merits or value, if any, of the property shown in this brochure. **WARNING: THE CALIFORNIA DEPARTMENT OF REAL ESTATE HAS NOT INSPECTED, EXAMINED, OR QUALIFIED THIS OFFERING.** Fees, memberships and restrictions may apply for certain amenities. Details available. Price and availability subject to change. ©October 2023. BBCP Kukui'ula Development Company (Hawaii), LLC. All rights reserved. No content from this brochure may be copied, republished, posted, or distributed in any way without prior permission from the developer.

