



HALE IKE MALA | KAHALAWAI 38

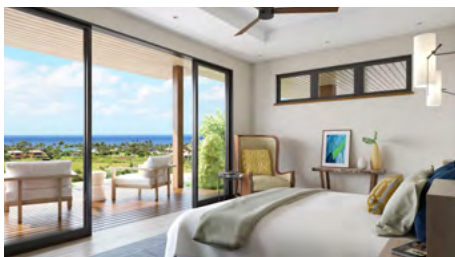
4 BED | 5 BATH | TOTAL LIVING: 4,857 SQ. FT. | LOT: 37,579 SQ. FT.


Kukui'ula®
SOUTH SHORE, KAUAI

3024 KAHALAWAI STREET

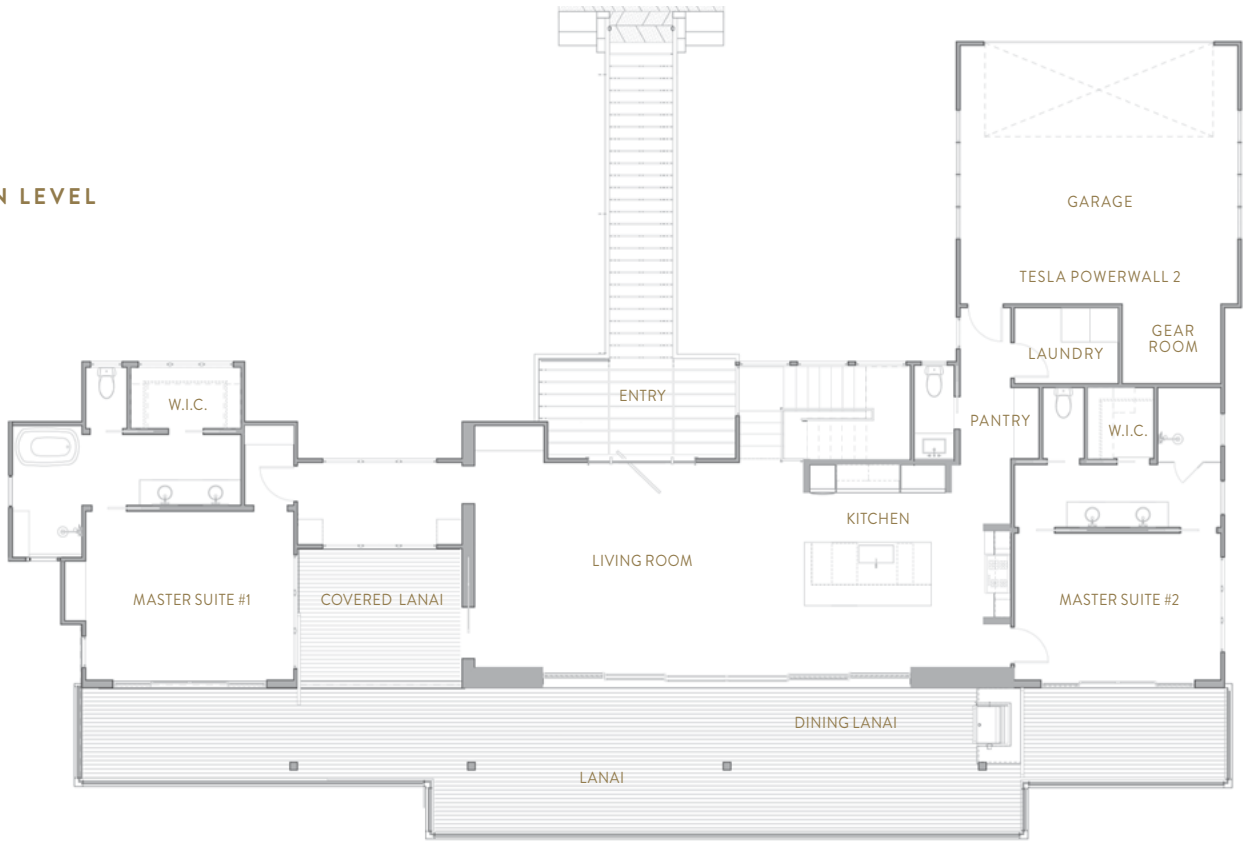
Modern design inspired by the works of Vladimir Ossipoff, the master of Hawaiian mid-century modern architecture. With its strong, simple roof lines, deep overhangs, standing seam metal roof, and vertical cedar siding – it leads the way for appropriate modernism at Kuku‘i‘ula. Named Hale Ike Mala, “Love of the Garden,” its generous setback and broad frontage on Kahalawai Orchard currently afford privacy and dramatic ocean views from every room of the home.

- TOTAL LIVING AREA: **4,857 SQ. FT.**
- BEDROOMS: **4**
- BATHROOMS: **5**
- LOT SIZE: **37,579 SQ. FT.**
- BUILD STATUS: **Completion August 2017**
- DESIGN: **Dean Sakamoto**
- ARCHITECT: **Kelly & Stone Architects**
- BUILDER: **Pac Build**
- INTERIOR DESIGN: **Philpotts Interiors**
- LANDSCAPE: **Ki Concepts**

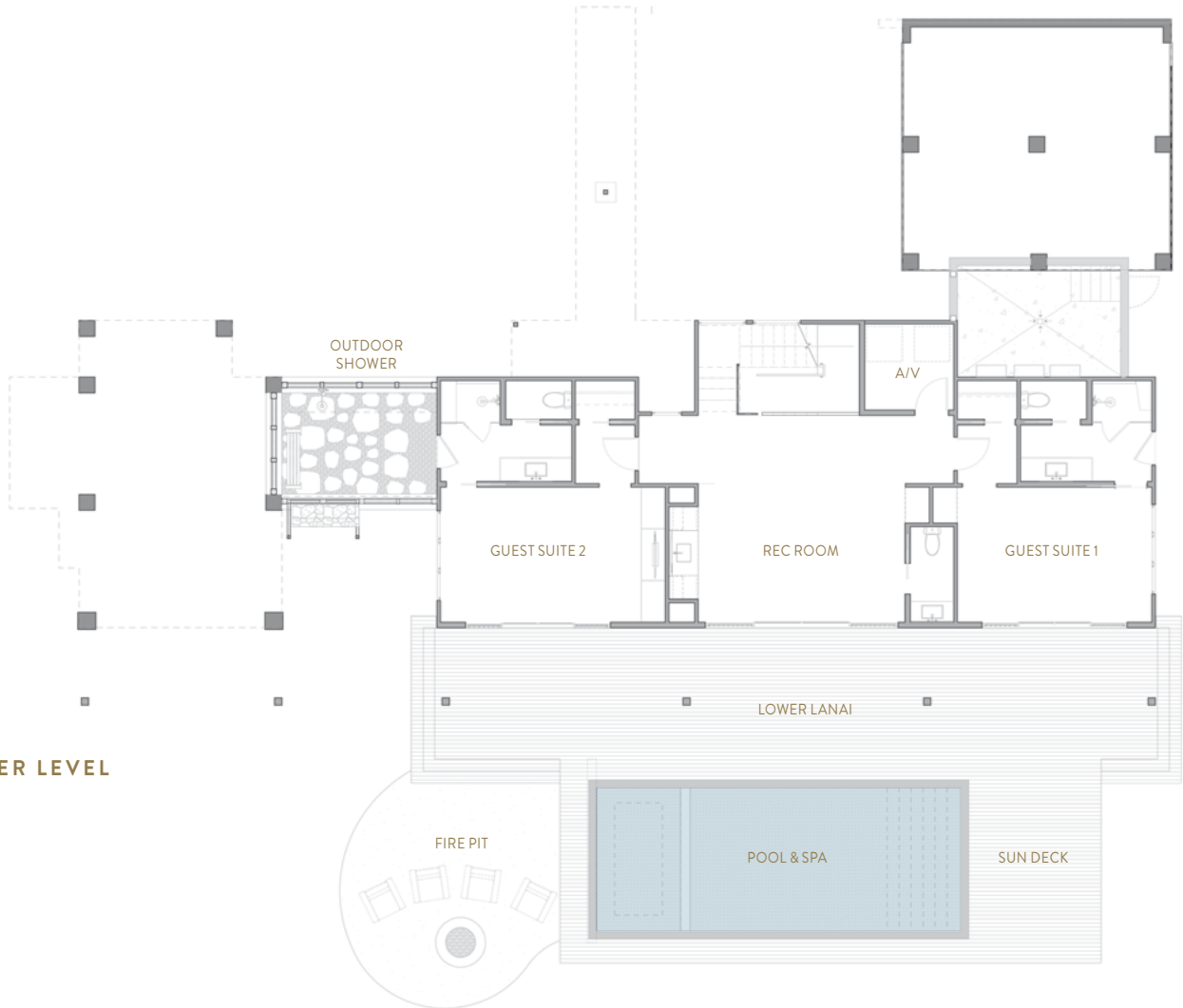


- Indoor/outdoor living is achieved through pocketing doors with a 29-ft. span opening up to the covered lounging and dining lanai.
- Dramatic bridge to main entry with large pivot door, and open tread staircase surrounded by large floor to ceiling windows.
- Dual master suites on the main living level.
- Kitchen outfitted with Sub-Zero and Miele appliances, along with DCS grill outside on the dining lanai.
- Teak hardwood and travertine stone floors, vaulted cedar clad ceilings with unique shadow-spacing of the cedar planks, Caesarstone countertops, pocket doors, and custom built-in walnut cabinets and wardrobes.
- A large covered lanai, sun deck, pool and spa with automatic cover, and fire pit create an outdoor oasis off the rec room which features a pool table, wet bar and powder room.
- Lutron home automation system for easy operation of efficient LED lighting and shades; home is pre-wired for audio/video and includes security system.
- Lumos solar panels integrated into roof, 3 at covered entry and 9 at the covered lanai; home is pre-wired for Tesla Powerwall 2.
- Complete furniture package designed by Marion Philpotts at Hawaii’s preeminent interior design firm, Philpotts and Associates.

MAIN LEVEL



LOWER LEVEL






Kukui'ula[®]
SOUTH SHORE, KAUAI

KUKUIULA.COM | 808.742.0234

2829 ALA KALANIKAUMAKA SUITE A-101, THE SHOPS AT KUKUI'ULA, KOLOA, HI 96756

The Developer does not represent or warrant that the actual view from any lot or that any existing view, will not be obstructed in the future. There are no protected views in the project and there are no assurances of the existence, or continuance, of any particular view. Kukui'ula Realty Group, LLC, project broker. The photos and renderings in this brochure are preliminary and are provided for illustration purposes only. The developer makes no representations, and expressly disclaims that the brochure images are accurately shown, shown to proportion or scale, or that all square footage areas represented are accurate. Photos of completed homes, fixtures, furnishings, water features, interior and exterior design, decorations and landscaping are also provided for illustration purposes only and the developer makes no representation or warranty regarding the same. This is not intended to be an offering or solicitation of sale in any jurisdiction where the development has not been registered in accordance with applicable law or where such offering or solicitation would otherwise be prohibited by law. Obtain the Property Report required by Federal law and the Public Offering Statement required by Hawaii law and read them before signing anything. No federal or state agency has judged the merits or value, if any, of the property shown in this brochure. **WARNING: THE CALIFORNIA DEPARTMENT OF REAL ESTATE HAS NOT INSPECTED, EXAMINED, OR QUALIFIED THIS OFFERING.** Fees, memberships and restrictions may apply for certain amenities. Details available. Price and availability subject to change. ©April 2017. Kukui'ula Development Company (Hawaii), LLC. All rights reserved. No content from this brochure may be copied, republished, posted, or distributed in any way without prior permission from the developer.

